



LE  
GROUPE  
SYSTÈME  
FORÊT

Les spécialistes de la  
géomatique en foresterie



# GESTION DES TABLES

FOR  
ARCGIS

VERSION 9.1.4

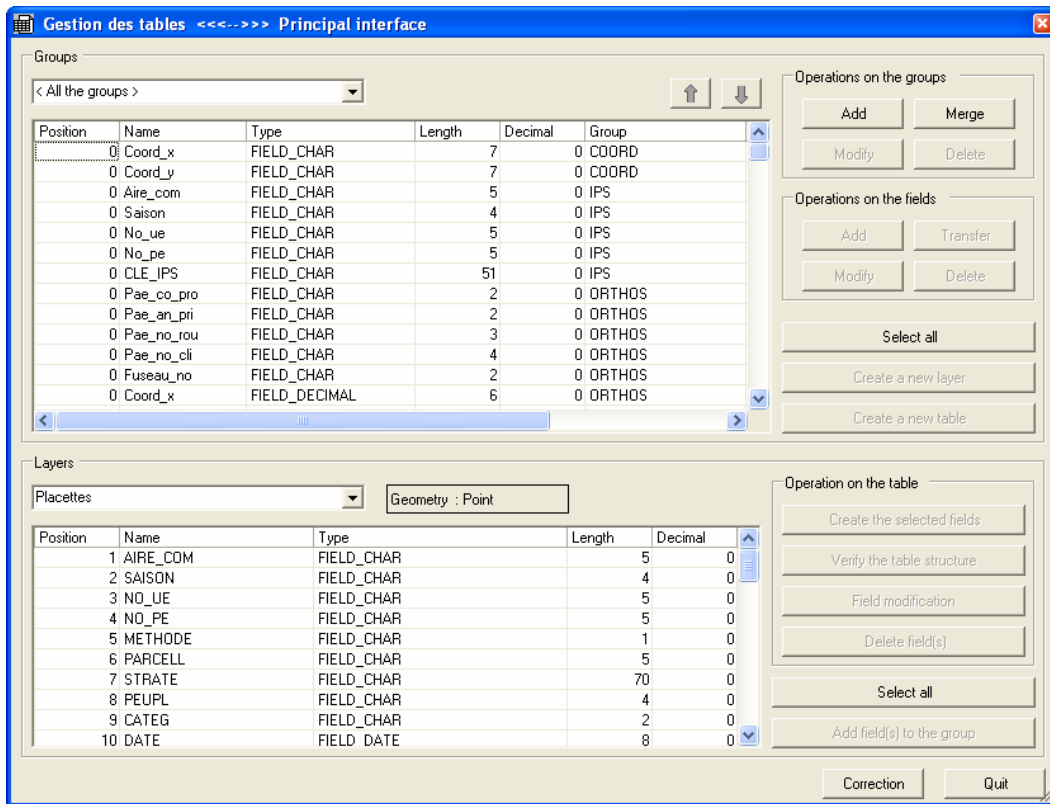
APRIL 2007

## TABLE DES MATIÈRES

1	INTRODUCTION.....	3
2	EVALUATION VERSION.....	4
3	INSTALLATION INSTRUCTIONS.....	5
3.1	SOFTWARE AND NECESSARY DATA .....	5
3.2	MICROSOFT DOT NET FRAMEWORK.....	5
3.3	ARCGIS 9.0 SERVICE PACK 1.....	6
3.4	EXTENSION SETUP FILE.....	6
3.5	INSTALLATION .....	6
3.6	EXTENSION LOADING .....	7
3.7	EXTENSION REGISTRATION.....	8
4	EXTENSION COMPONENTS.....	9
5	MAIN INTERFACE .....	11
6	STRUCTURE VERIFICATION.....	12
7	GENERATING A GROUP.....	14
8	CORRECTION OF A LAYER / TABLE .....	15
9	CONFIGURATION .....	16
10	VERSIONS.....	17
10.1	VERSION 9.1.1 (FEBRUARY 7, 2006) .....	17
10.2	VERSION 9.1.2 (MARCH 21, 2006).....	17
10.3	VERSION 9.1.3 (SEPTEMBER 18, 2006).....	17
10.4	VERSION 9.1.4 (APRIL 30, 2007) .....	17

# 1 INTRODUCTION

« Gestion des Tables » is an extension allowing the management and structuring of databases directly into ArcMap through predefined user parameters. The extension uses field groups, which parameters are already stored into a table (.dbf). The user can then add fields to a layer (or table), verify the structure of the said layer or table according to the group, modify the parameters of existing fields, generate a group from a layer (or table) or create a new layer with a defined structure.



## 2 EVALUATION VERSION

It is possible to use an evaluation version of the « Gestion des tables » extension for a 15 day period.

To use this evaluation version, simply click on the « **Evaluation** » button of the registration interface.

Once the evaluation period is over, it will be necessary to register (purchase) the extension for future use.

To purchase a license for the « Gestion de Tables » extension, contact Le Groupe Système Forêt inc. at (418) 877-7253 or via email at [info@gsf.qc.ca](mailto:info@gsf.qc.ca) .



## 3 INSTALLATION INSTRUCTIONS

### 3.1 Software and necessary data

- Microsoft Dot Net Framework 1.1 and Service Pack 1
- ArcGIS Geographical Information System 8.2 or higher.
- gestion\_tables.dbf table supplied with the extension

### 3.2 Microsoft Dot Net Framework

**IMPORTANT:** « Gestion des tables » requires a .NET objects library to function properly (.NET Framework). If this function is not installed, you must install it before installing the « Gestion des tables » extension.

In the event where the extension was downloaded off of the internet or that the Dot Net Framework is not found on the CD-ROM, you can download the .NET Framework file, you can use the links below:

#### **For Windows in French**

[http://www.gsf.qc.ca/distribution/Microsoft/DotNet\\_Frwk\\_FR/1.1/](http://www.gsf.qc.ca/distribution/Microsoft/DotNet_Frwk_FR/1.1/)

#### **Service Pack 1 for Windows in French**

[http://www.gsf.qc.ca/distribution/Microsoft/DotNet\\_Frwk\\_FR/1.1\\_SP1/](http://www.gsf.qc.ca/distribution/Microsoft/DotNet_Frwk_FR/1.1_SP1/)

#### **For Windows in English**

[http://www.gsf.qc.ca/distribution/Microsoft/DotNet\\_Frwk\\_EN/1.1/](http://www.gsf.qc.ca/distribution/Microsoft/DotNet_Frwk_EN/1.1/)

#### **Service Pack 1 for Windows in English**

[http://www.gsf.qc.ca/distribution/Microsoft/DotNet\\_Frwk\\_EN/1.1\\_SP1/](http://www.gsf.qc.ca/distribution/Microsoft/DotNet_Frwk_EN/1.1_SP1/)

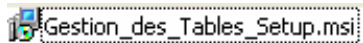
### 3.3 ArcGIS 9.0 Service Pack 1

**Service Pack 1 is essential** for the proper functioning of the « Gestion des tables » extension. This service pack is available directly from ESRI.com. However, we recommend installing the most recent service pack, SP3. This service pack is available on the GSF Server through the following link:

[http://www.gsf.qc.ca/distribution/ArcGIS/ArcGIS\\_9.0\\_SP\\_3.zip](http://www.gsf.qc.ca/distribution/ArcGIS/ArcGIS_9.0_SP_3.zip)

### 3.4 Extension setup file

The only needed file is the setup file:



### 3.5 Installation

**IMPORTANT:** You must exit all ArcGIS applications (ArcMap, ArcCatalog, etc.) before installing the extension.

To install the extension, simply double-click on the Gestion\_des\_Tables\_Setup.msi icon and follow the installation instructions.

The default installation folder will be the following:

**C:\Program Files\GSF\Gestion des tables**

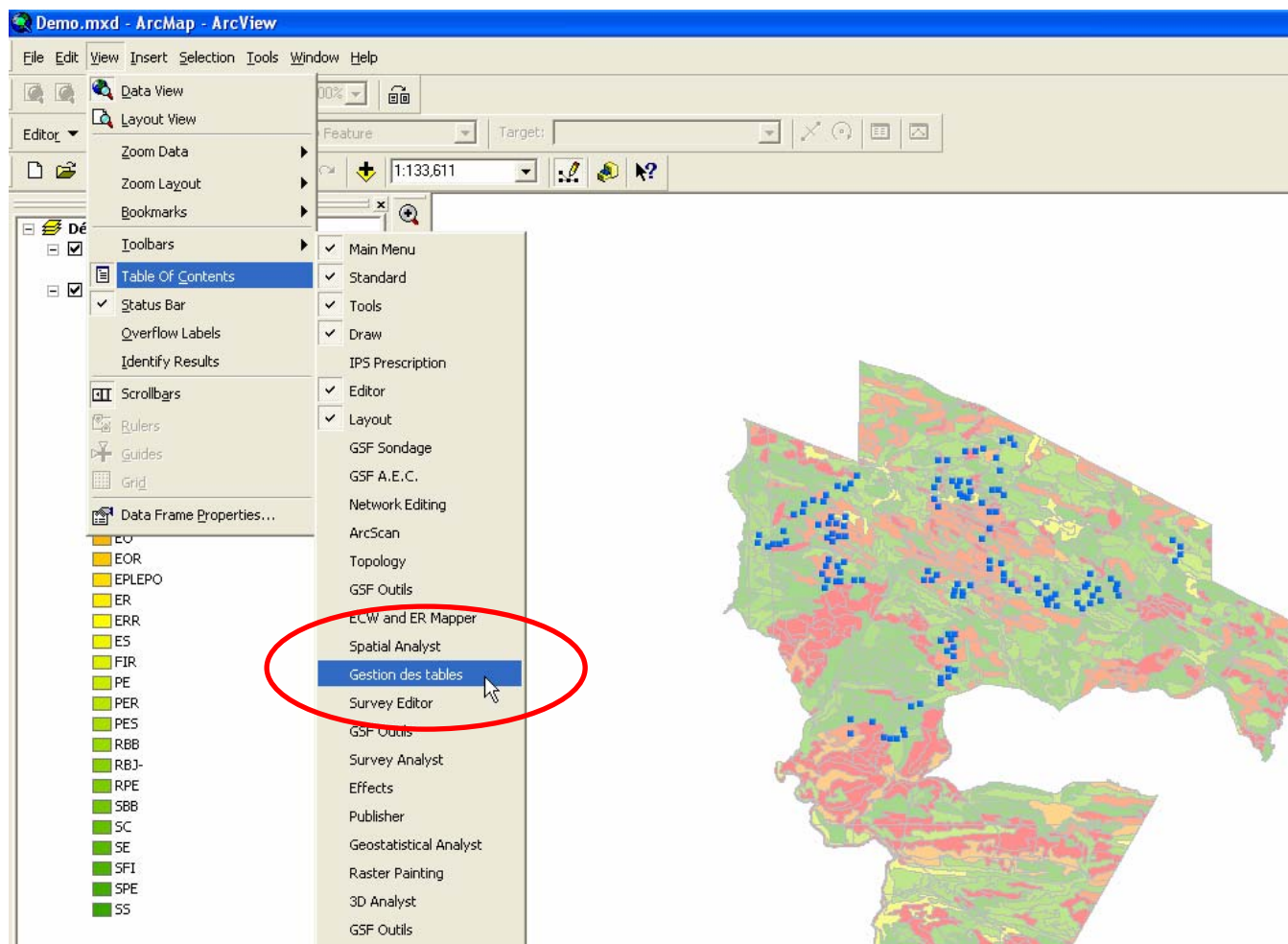
You may choose to install the extension in another folder, but it is strongly recommended that you use the default folder.

Multiple files will be copied in the installation directory. Here is a description of the only file that can be manually modified by more advanced users.

- **gestion\_tables.dbf:** table containing all groups and fields.

### 3.6 Extension loading

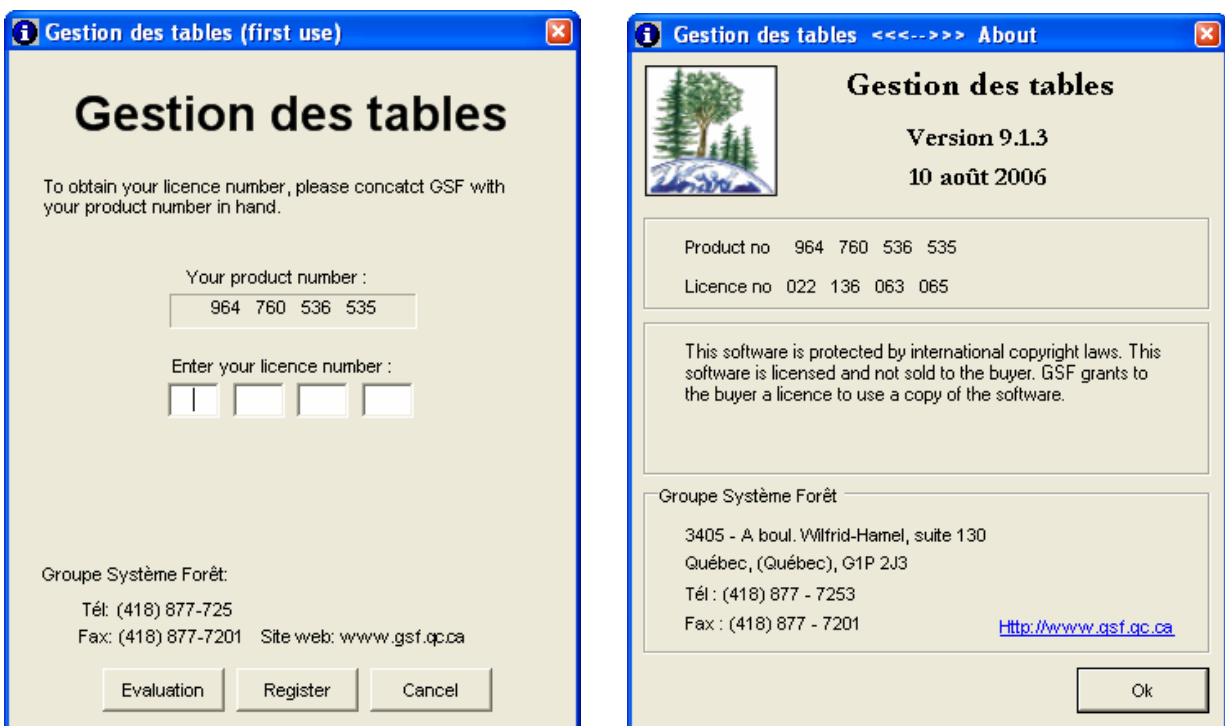
After installing the extension, launch ArcMap and through the **View** and **Toolbars** menus, choose to display the « Gestion des tables » toolbar by putting a check mark next to it.



### 3.7 Extension registration

When using the product for the first time, the following window will be displayed. A product number will already appear in the window. This product number will allow you to obtain a license number to activate the application.

To proceed with the registration of the application, contact le Groupe Système Forêt Inc by phone at (418) 877-7253 or via email at the following address: [info@gsf.qc.ca](mailto:info@gsf.qc.ca) . You must have the generated product number in hand for this process.



At all times, you can access the « **About** » window for information on your product and license numbers, in addition to information on the current version of the application you are using.

**IMPORTANT:** The license information will be saved in the Licence.txt file, located in the extension's installation directory.

## 4 EXTENSION COMPONENTS

The extension comprises of a menu, « Gestion des tables », accessible in the toolbars section. This menu contains 4 operation functions and one configuration function.



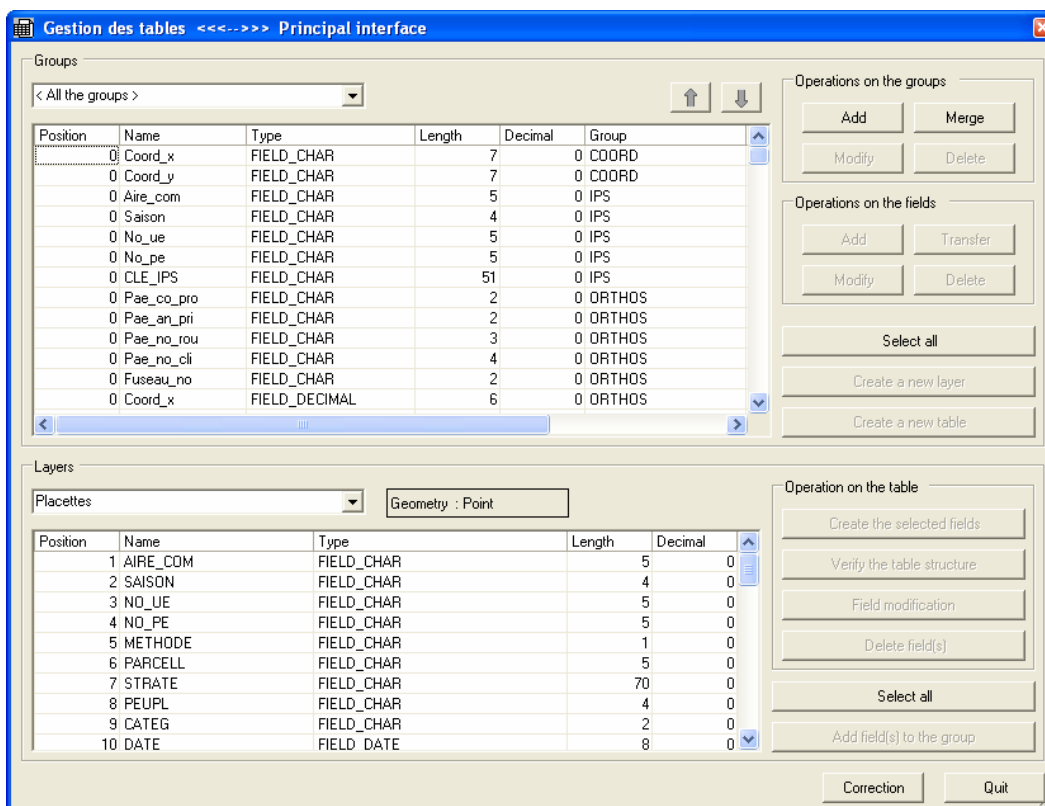
- **Main Interface:** Interface allowing different possible operations on groups and table fields in the « gestion\_tables.dbf » file or on the fields of a selected layer (table).
- **Structure verification:** Function that enables the validation of the field structures of a layer (table) with a predefined group in the « gestion\_tables.dbf » table.
- **Generating a group:** Allows the generating of a new group in the « gestion\_tables.dbf » table from selected fields in a layer (table).
- **Correction of a layer / table:** Enables the correction of a layer or table according to a selected group.

- **Configuration:** Enables the specification of the location of the « gestion\_tables.dbf » file and the language of the extension.
  
- **About Gestion des tables:** Allows the user to access the information on your product and license numbers, in addition to information on the current version of the application you are using.

## 5 MAIN INTERFACE

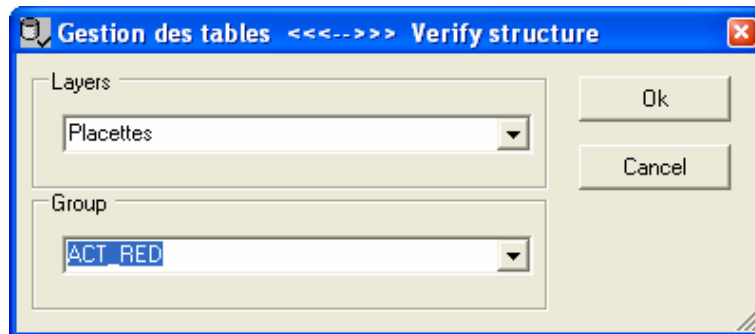
The main interface constitutes of a tool for better managing groups and table structures. The user can manipulate groups and their entities (predefined fields) by adding fields, modifying parameters and merging groups.

The interface also allows for the structuring of layers and tables included in the document.

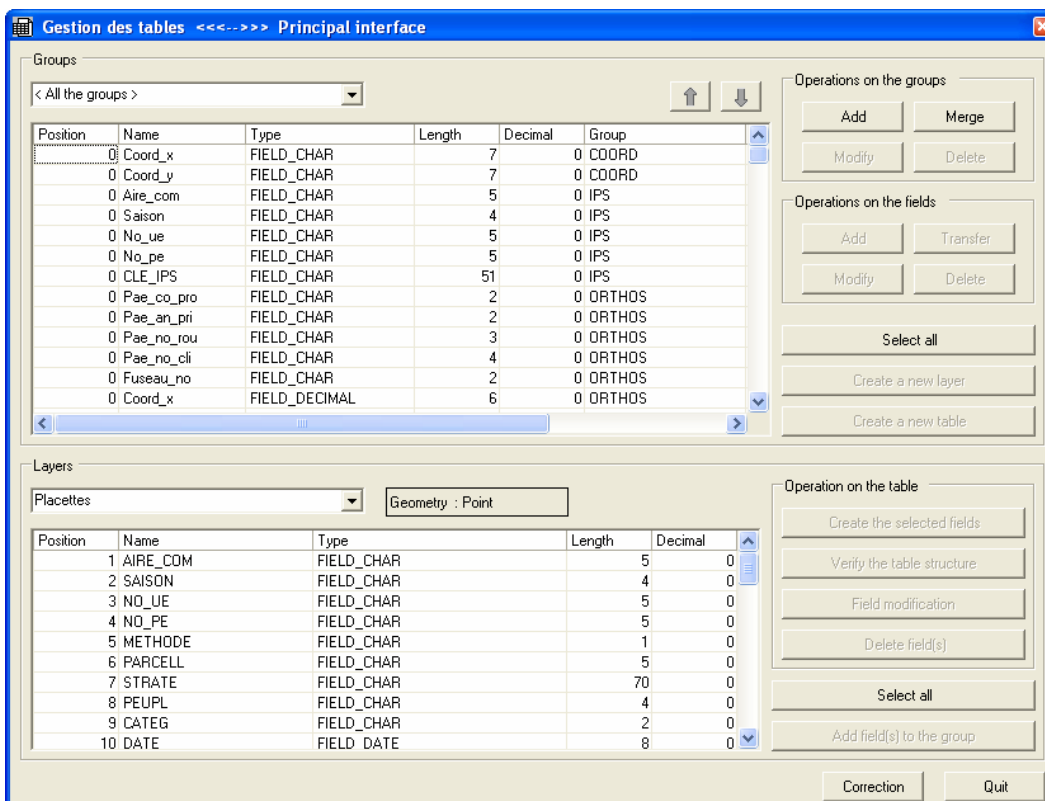


## 6 STRUCTURE VERIFICATION

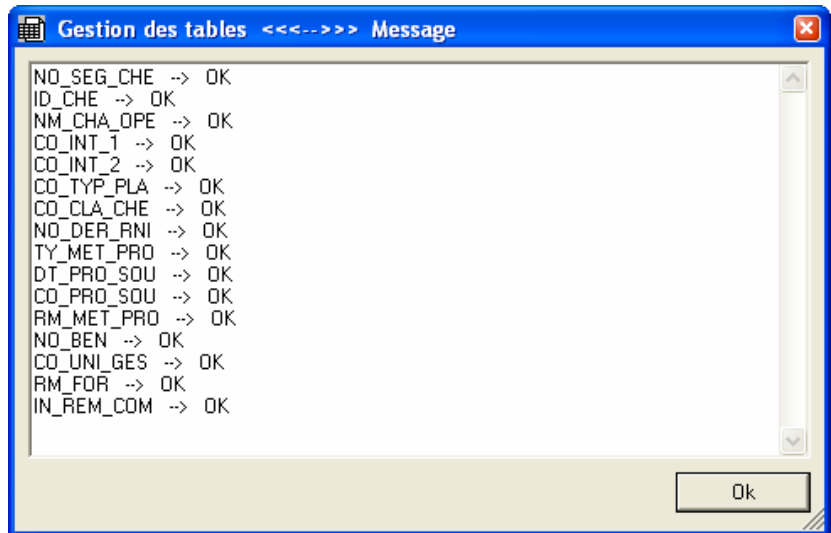
This function makes it possible to compare fields of a layer or table with a predefined group. It is also possible to launch this function directly from the menu.



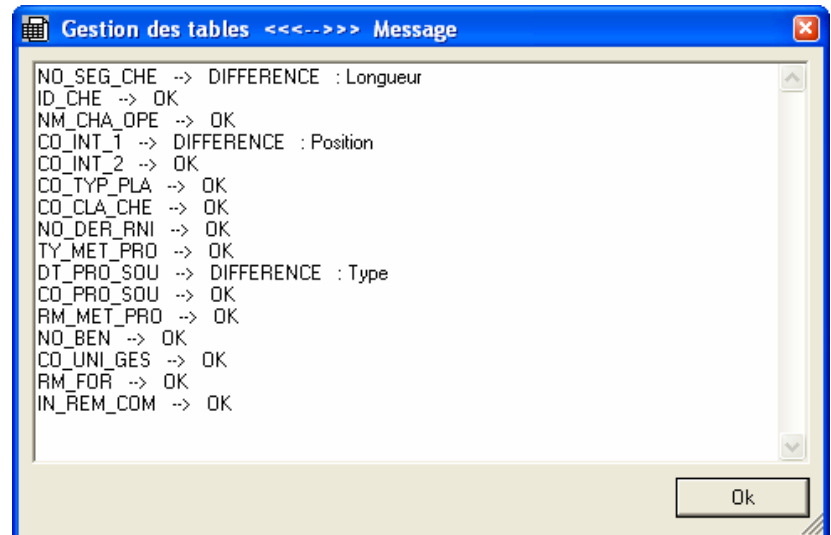
If the function is launched from the main interface, the group selected from the top-left drop-menu will be used as the element of validation.



The result of the analysis is presented in a message window, listing all the fields and indicating if they are the same as the parameter group.



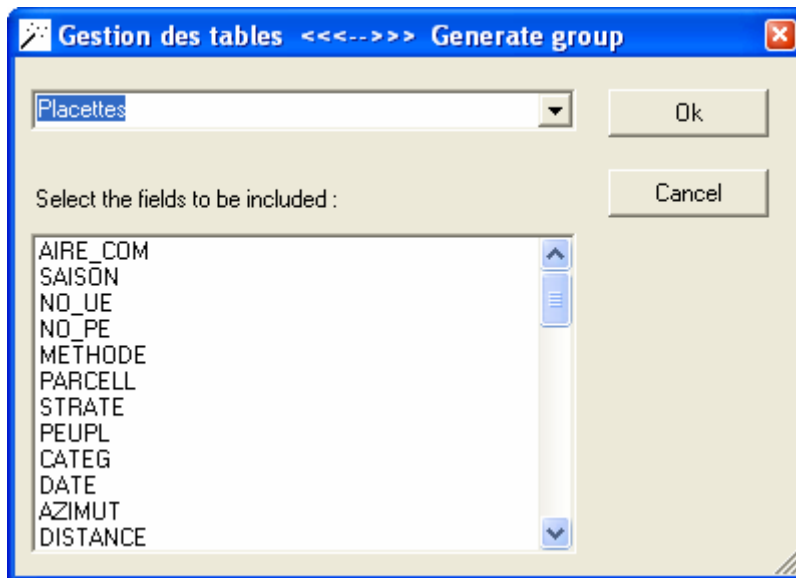
The possible outcome messages are OK, ABSENCE or DIFFERENCE. If there is an absence, a message will indicate if the field is absent from the layer or the table. For differences, the faulty parameter(s) will be defined right after.



## 7 GENERATING A GROUP

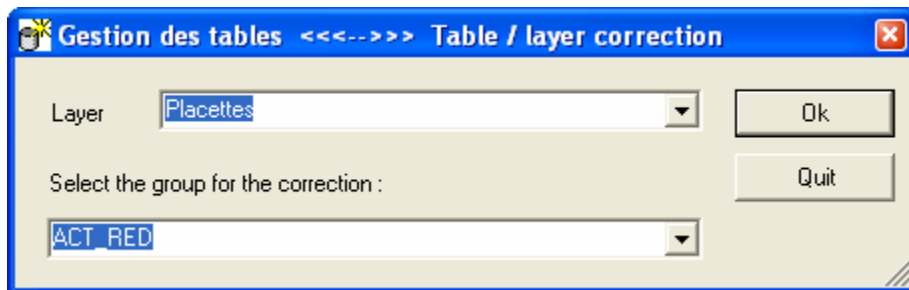
It is possible to generate a group from a table or layer that are included in the document. The user must first select the fields to be included from the scroll-down menu below.

If the specified group already exists, the user will be able to proceed with the treatment, merging the displayed information with the characteristics of the selected fields from the table.



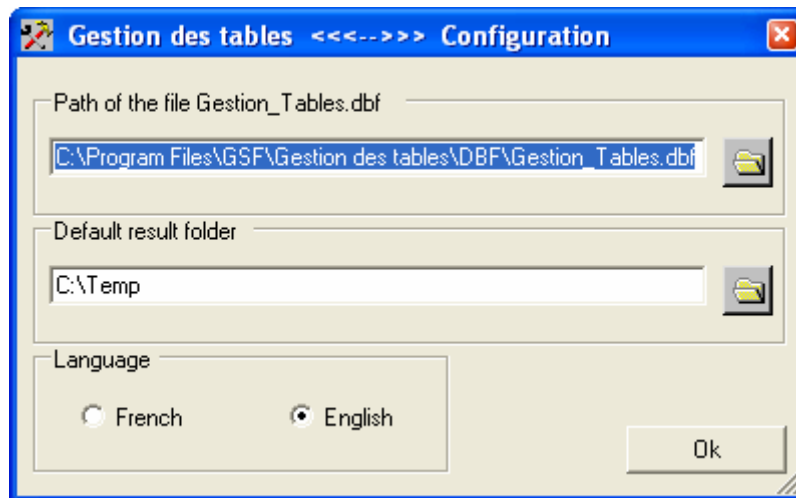
## 8 CORRECTION OF A LAYER / TABLE

The correction of a layer / table function enables a correction according to a chosen group. The function will verify if the fields of the chosen group are present in the layer or table to be corrected. In the case where the fields are not present, a new layer / table is created with the necessary fields properly inserted. The original fields are then created and the data for those fields is transferred.



## 9 CONFIGURATION

The configuration interface allows the user to determine the location of the « Gestion\_tables.dbf » file in which all the information on the fields and groups are read and saved. It is also where one can define the default output directory for layer and tables created. It is finally where the user can choose the language of the application.



## 10 VERSIONS

### 10.1 Version 9.1.1 (February 7, 2006)

- Launch of the ArcGIS version of the extension.
- The « field modification in a layer » will be available in the next version due to an unresolved problem with ESRI objects (ArcObjects).

### 10.2 Version 9.1.2 (March 21, 2006)

- Correction of the installation problem, removal of icons that would automatically appear on the Windows « Start » menu.
- The « field modification in a layer » will be available in the next version due to an unresolved problem with ESRI objects (ArcObjects).

### 10.3 Version 9.1.3 (september 18, 2006)

- Adding of the correction of a layer / table function.
- Adding of the field modification function.
- English / French translation of the interface. (available choices through the configuration interface.)
- Correction of an error when using multiple dataframes in a document.

### 10.4 Version 9.1.4 (April 30, 2007)

- Correction of an error in the installation process component not properly register and main interface don't appear on the screen.