



Le
**GROUPE
SYSTÈME
FORÊT inc.**
Les spécialistes de la
géomatique en foresterie

SMF LITE

**TRUCKBASE SLV FILE CONVERTER TO SHAPEFILE
FOR ARCVIEW GIS**

VERSION 3.3.1

NOVEMBER 006

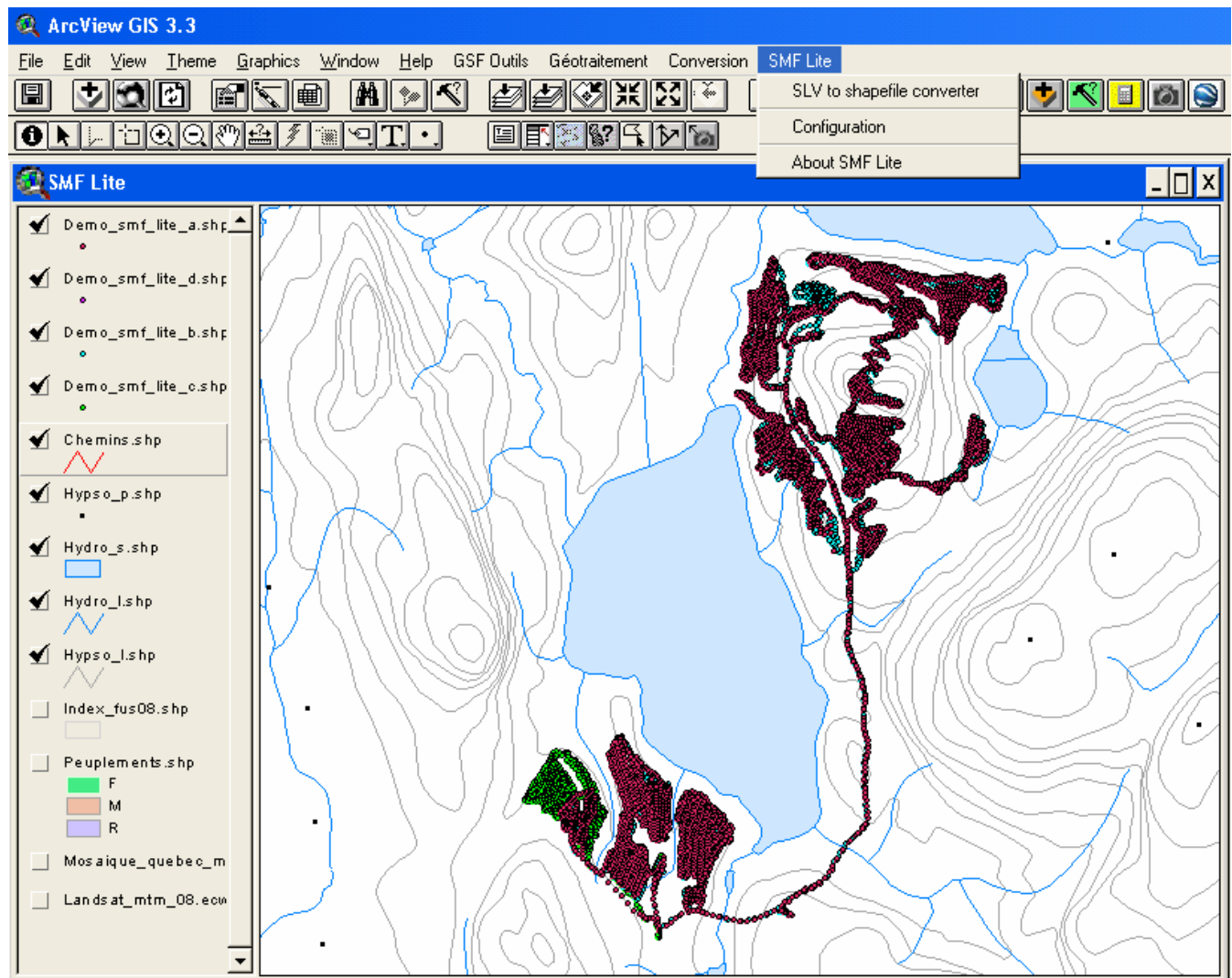
CONTENTS

1	INTRODUCTION.....	3
2	EVALUATION VERSION.....	4
3	INSTALLATION.....	4
3.1	PREREQUISITES FOR THE EXTENSION AND ARCVIEW.....	4
3.1.1	For ArcView 3.2.....	4
3.1.2	For ArcView 3.3.....	4
3.2	INSTALLATION FILES.....	5
3.3	FILES AND DIRECTORY DESCRIPTION.....	5
3.4	SMF_LITE.EXT FILE.....	6
4	EXTENSION REGISTRATION.....	8
5	EXTENSION MENU.....	9
6	SLV TO SHAPEFILE CONVERTER.....	9
7	CONFIGURATION.....	9
8	VERSIONS.....	10
8.1	VERSION 1.6 (AUGUST 2000).....	10
8.2	VERSION 1.9 (MAY 2001).....	10
8.3	VERSION 2.0 (JULY 2001).....	10
8.4	VERSION 2.1 (SEPTEMBER 2001).....	10
8.5	VERSION 3.3.1 (NOVEMBER 2006).....	10

1 INTRODUCTION

The « **SMF Lite** » extension contains a tool to convert Truckbase GPS file (*.slv) into Shapefile.

The « **SMF** » extension also contains this converter function, but is dissociated by several other functions allowing of points files filtering with geometric algorithm, sectors groupings as well as the creation of lines and polygons locating the treated places.



2 EVALUATION VERSION

Since version **3.3.1**, it is possible to evaluate the extension for a 14 days period. This evaluation **limits the importation process to 150 points maximum**. Demo file are provided with the installation of the extension. Those are located in:

C:\ESRI\AV_GIS30\ARCVIEW\EXT32\SMF_Lite_Demo\

3 INSTALLATION

3.1 Prerequisites for the extension and ArcView

To use the extension without problem, it is recommended to have ArcView GIS version 3.2a or 3.3 installed. The extension can require the installation of patch, available on the ESRI or GSF Web site.

3.1.1 For ArcView 3.2

ArcView 3.2a Patch (27 mb)

http://www.gsf.qc.ca/Distribution/ESRI/AV3/AV3_Patch_3.2a.zip

<http://support.esri.com/index.cfm?fa=downloads.patchesServicePacks.viewPatch&PID=25&MetaID=477>

ArcView 3.x Windows XP Patch (0.6 mb) **Only if you are running Windows XP**

http://www.gsf.qc.ca/Distribution/ESRI/AV3/AV3_Windows_XP_Patch.zip

<http://support.esri.com/index.cfm?fa=downloads.patchesServicePacks.viewPatch&PID=25&MetaID=470>

3.1.2 For ArcView 3.3

ArcView 3.x Windows XP Patch (0.6 mb) **Only if you are running Windows XP**

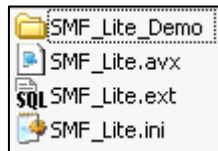
http://www.gsf.qc.ca/Distribution/ESRI/AV3/AV3_Windows_XP_Patch.zip

<http://support.esri.com/index.cfm?fa=downloads.patchesServicePacks.viewPatch&PID=25&MetaID=470>





3.2 Installation files

To install the extension, copy the files provided in the default extensions directory, which is:

C:\ESRI\AV_GIS30\ARCVIEW\EXT32



3.3 Files and directory description

Elements	Description
 SMF_Lite_Demo	Demo file for evaluation purpose (SLV files)
 SMF_Lite.avx	ArcView 3.x extension
 SMF_Lite.ext	Parameters file for \$AVEXT or \$USEREXT variables
 SMF_Lite.ini	Configuration file

3.4 SMF_Lite.ext file

IMPORTANT : If you have administrative access to the extensions directory of ArcView, you can be unaware of this section.

Since **3.3.1** version, a new file as join the installation package. This one can be necessary and also can be modified in certain cases of advanced installation, where the users do not have an administrative access in the extensions directory of ArcView. This is necessary because some functions will read and write in the file parameters file **SMF_Lite.ini** which is by default installed in the same repertory as the extensions.

This text file can only contain on of the two following values

- \$AVEXT
- \$USEREXT

One of the two values is used by the extension to know where will be the parameters file **SMF_Lite.ini**. The variables \$AVEXT and \$USEREXT are emplacement variables on the hard disk specify each time ArcView start. By default, the variable \$AVEXT has the value “C:\ESRI\AV_GIS30\ARCVIEW\EXT32” and this one should not be changed for a correct operation of the ArcView GIS software. Concerning the variable \$USEREXT it is by default associated with the variable \$HOME of ArcView, specifying the working directory of a project.. What can be modified in certain advanced installation (extension on a server accessed by several users), it is the variable \$USEREXT, in order to specify a different directory which the user could have an administrative access for writing in the file **SMF_Lite.ini**. In this case, \$USEREXT constitutes a different directory of \$AVEXT and probably be on the local computer.

To modify this variable, consult the following page...

To modify this variable it is necessary to edit a default ArcView installation file witch is :

- C:\ESRI\AV_GIS30\ARCVIEW\ETC\STARTUP

Although this file does not have extension, it is a text file which can be modified with a text editor (Notepad for example). In this file, it is necessary to modify the section where there is the following text :

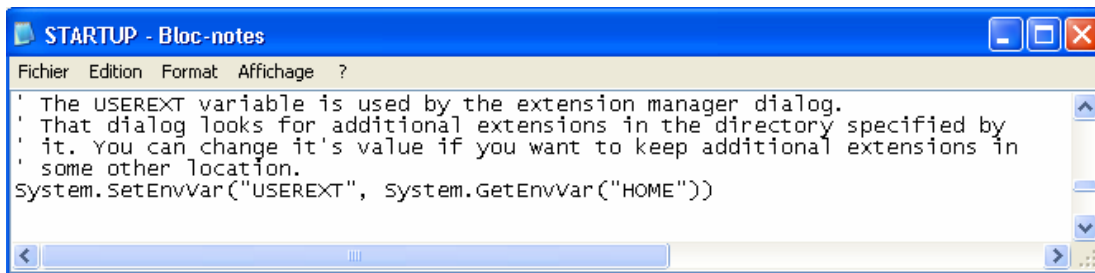
```
System.SetEnvVar(« USEREXT »,System.GetEnvVar(« HOME »))
```

To modify the directory value of the \$USEREXT variable, edit the following line

- System.GetEnvVar(« HOME »)

For :

- « C:\Temp » (where C:\temp is the desired directory)

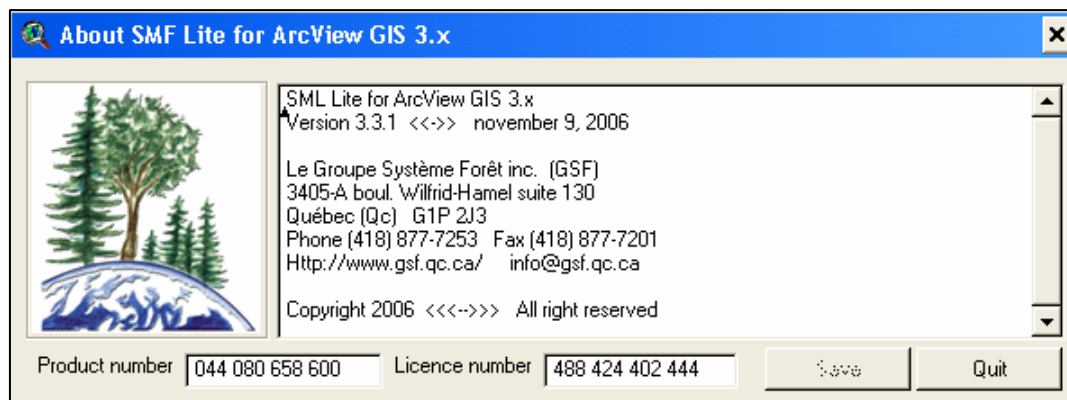


4 EXTENSION REGISTRATION

The extension is protected by a virtual key. After the file copy process of the installation mentioned in the preceding pages, it is necessary to register the extension by contacting Groupe Système Forêt by email at info@gsf.qc.ca or telephone (418) 877-7253. A product number of 12 characters will be generated for each specific computer used. It is necessary to provide to GSF the product number so they can generate a license number, also being a 12 characters number. This number will have to be written in the “About” interface accessible thru the extension menu.

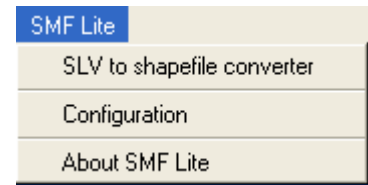
Registration steps

1. Start an ArcView project
2. Load the **SMF Lite** extension, with the menu **File** and **Extension**
3. Within a view, choose the menu **SMF Lite** and **About SMF Lite**
4. Contact GSF and give them the Product number (located in the lower left corner). This number will be use to generate a license number, witch will need to be written in the lower right corner. After that, click **SAVE**.
5. The operation will create a **SMF_Lite.lic** file witch will be located in the extension directory.



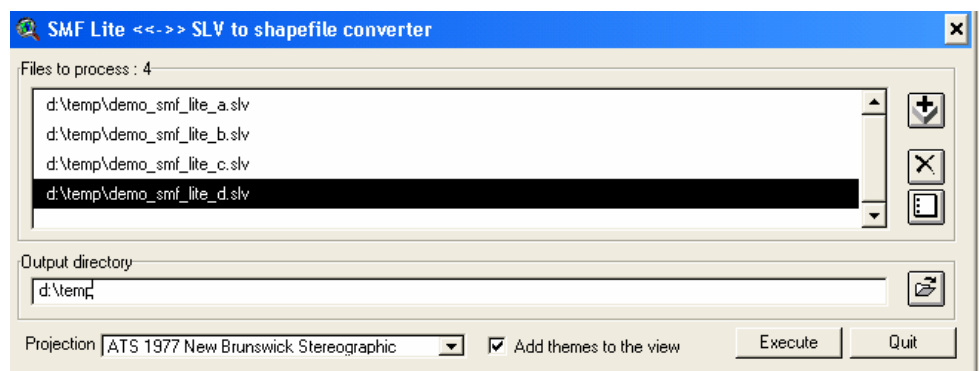
5 EXTENSION MENU

The SMF Lite Extension is composed of a menu located within the views. This menu contains a SLV to Shapefile converter function and a configuration window permitting the user to specify a different language for the extension.



6 SLV TO SHAPEFILE CONVERTER

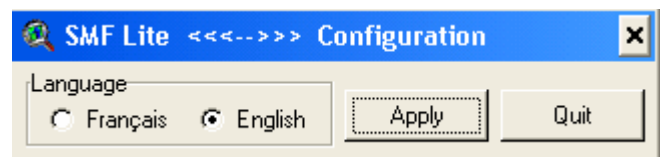
Via this function, it is possible to convert several SLV files. An option makes it possible to project the data whereas another offer with the user the choice to add the new themes to the active view.



The buttons on right-hand sides of the interface allow the addition, the removal and the complete obliteration of the list of files to be treated.

7 CONFIGURATION

It is possible to change the language of the extension via the interface of configuration. This change will apply to all the interfaces of the extension as well as the messages appearing during the use.



8 VERSIONS

8.1 Version 1.6 (august 2000)

There is no information available.

8.2 Version 1.9 (may 2001)

There is no information available.

8.3 Version 2.0 (July 2001)

There is no information available.

8.4 Version 2.1 (September 2001)

There is no information available.

8.5 Version 3.3.1 (November 2006)

- Complete reprogramming of the extension and renaming it (last name was Import SLV)
- Development and addition of an interface of configuration allowing to put the extension in a different language (English or French)
- Addition of a license manager and an evaluation version
- Addition of a network parameter with the file SMF_Lite.ext to use the extension on a right access server.
- Addition of a SMF_Lite.ini file allowing the saving of the parameters preset in each interface.