



Firmware Release Notes

Survey/GIS

Date: October 17, 2007
Product: PM3
Subject: Firmware Release Maintenance Version V2.1
Number: PM32007_10 revA

Introduction:

The PM3 maintenance version V2.1 is a no-cost firmware update for the PM3 receiver. It fixes some firmware defects that have been reported by users, dealers and Magellan Navigation Technical Support staff.

PM3 firmware version V2.1 includes new releases of:

- OS : OS 2.16
 - GPS Firmware : P010
 - Application Firmware : Surveying and Mobile Mapping 2.07
- + a new version of FAST Survey
- FAST Survey : 2.1.1

There are two versions of PM3 V2_1: PM3NAV2_1.ZIP file for North, Central and South America and PM3EUV2_1.ZIP for the rest of the world. The only difference between the two versions is the background map.

Upgrade procedure

Warning: If you already are a user of the RTK option and FAST Survey, you will need to re-enter the activation code for each of these options after upgrading the firmware. So if you have lost these codes, please do the following before upgrading: run successively the “unlock RTK option” and “Unlock Fast Survey” utilities so you can view and write down each of these codes.

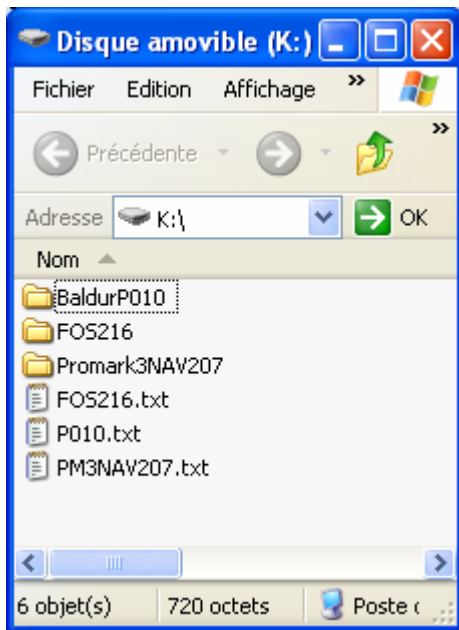
1-Updating the OS and the Surveying & Mapping Software Applications

The upgrade procedure is as follows:

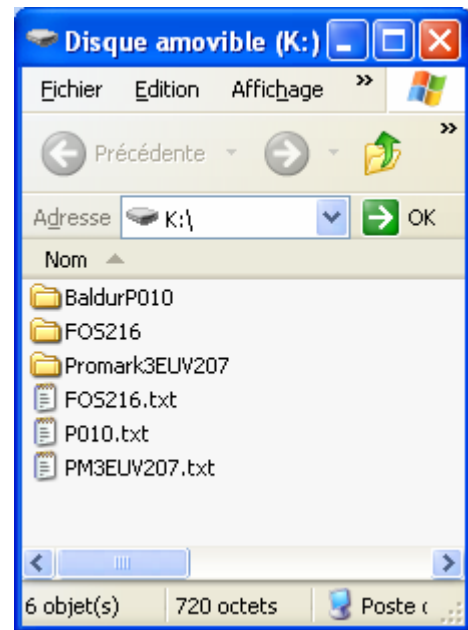
1. Go to the ftp.magellangps.com FTP site and download the PM3 V2.1 firmware from the /Land Survey/PM3/PM3V2_1 folder to your office computer. Choose the firmware version that is suitable for your location.
2. Extract the files from the Zip file, making sure you preserve the folder structure while doing this (see below).

3. Insert a SD card into the card reader of your office computer. Using Windows Explorer on your PC, navigate to the drive used by the card reader, right-click on it and select the Format option. Select FAT32 as the file system for cards 64 MB or larger. Formatting the card will delete all its data.
4. Copy the unzipped files and folders to the SD Card. The content of the SD card should then be as follows:

For North, Central and South America:



For the rest of the world:



5. Remove the SD card from the card reader and insert it into the PM3
6. On the PM3, double tap Utilities and then AutoLoader.
7. Select the FOS216.txt file and tap OK. Let the unit complete the installation and restart.
8. Launch again AutoLoader and select the PM3NAV207.txt for North, Central and South America or PM3EUv207.txt for the rest of the world, and then tap OK. Let the unit complete the installation.
9. Lastly, repeat the previous step with the P010.txt file.
10. At the end of the installation, restore the factory settings by pressing simultaneously the following keys LOG+IN+MENU.

3-Updating Fast Survey

The upgrade procedure is as follows:

1. Go to the <ftp.magellangps.com> FTP site and download the “Fast Survey.Cab” file corresponding to the language you want to install from the /Land Survey/PM3/PM3V2_1.FastSurvey folder to your office computer.
2. Copy this CAB file to the root directory of your SD Card.
3. Remove the SD card from your local card reader and insert it into the PM3
4. On your PM3, go into the Utility directory and run the “install Fast Survey” Utility
5. Make sure that the Fast survey button is checked on
6. Tap install and then let the unit complete the installation of Fast Survey

Installing Fast Survey may also include the installation of the datum grids you need for your applications. To let the utility also install datum grids when installing Fast Survey, do the following:

1. Insert the Fast Survey CD in the CD drive of your office computer.
2. Browse the CD to find the “Grids” folder containing the list of available datum grids (Grids are available as CAB files)
3. Insert the SD card in the card reader of your office computer
4. Create a “Grids” folder in the root directory of your SD card. Copy the grid files you need from the Magellan Fast Survey CD to the “Grids” folder on the SD card.
5. Remove the SD card from the card Reader and insert it into the PM3 unit.
6. Run the install Fast Survey utility. The utility lists the grids stored on the SD card.
7. Check on the grids you want to install
8. Tap the Install button and then let the unit complete the installation.

4 -Activating the RTK software and FAST Survey

1. To unlock the RTK option for the Surveying and Mobile Mapping application, go in the “Utility” directory and run the “Unlock RTK option” utility.
2. Enter the RTK code and then tap OK. An acknowledgement message should appear.
3. FAST Survey is unlocked in the same way, but you must unlock the RTK option for the Surveying and Mobile Mapping applications **before** unlocking FAST Survey.

Compatibility

This release of PM3 is compliant with the following versions of:

GNSS Solutions	2.50.06
Mobile Mapper Office	3.4

New features

None

Resolved Problems/Improvements

1. Wrong-date error *
2. Stop & Go job seen as dynamic job
3. WAAS satellite reception in North, Central and South America
4. Connection with new mobile phone generation
5. Blue tooth Improvement
6. Loss of the Fast Survey option code (Station Total, GPS...) after upgrading the OS.
7. Fast Survey: The cab files of the translated release contain the antenna file specific for ProMark3.
8. Surveying & Mobile Mapping MMI (Man Machine Interface) improvement

*: We believe the Wrong-date is corrected. The bug has not been seen in this version.

Known Issues

- The **MM Beacon is NOT supported by OS 2.16**: If you want to use the Beacon, you must revert to the V1 release (OS V1.57 and software application V1.21).
- The Windows CE USB drivers used by PM3 are not compatible with **Windows Vista** (These drivers are not supported by Windows Vista).

Recommendations

If you use **Surveying firmware**:

- RTK Initialization in KPI mode: It's preferable to use the "Log" function than the "Menu" function. In the first one, you can check and modify the antenna parameters (specially height)
- We recommend using the serial port to transfer data from/to GNSS Solutions on the PC and the Surveying program on the PM3
- The raster maps must be referenced in meters, never in feet.
Chinese language : Surveying is not available in Chinese language. If you want to use this language, you should use FAST Survey.

If you use Fast Survey:

- Make sure after upgrading your unit, that the surveying application has been launched at least one time.
- Base configuration : If you configure your receiver as UHF base station using **FAST Survey**,
 - don't forget that the UHF link (9600 bauds) must be configured by using the DGPS Configuration utility. (The UHF link is automatically configured when you use **surveying** to configure your base).
 - The antenna height entered by using the menu Base/Rod height is not taken account by GNSS Solutions: You should define it under GNSS Solutions.
- If you want to modify the antenna height, don't use the menu "Survey/Store" to do it: change it on the "Rover Settings" menu.
- We recommend using the USB port to transfer data between FAST Survey and GNSS Solutions.

If you use Mobile Mapping:

- It's not possible to configure your receiver as a real-time base station with the **Mobile Mapping** application: the "base configuration" menu, available by pressing the **LOG** button, launches only the raw data record (as with the previous release). If you want to configure your PM3 as real-time base station, you must use the **Surveying** application
- We recommend using the USB port to transfer data from/to MobileMapper Office to Mobile Mapping.

US Radio: Channels 8 and 30 are not available.