



GeoEye is a premier provider of superior satellite and aerial imagery, location information products, and image-processing services. Our products and services enable timely, accurate, and accessible location intelligence that translates into timely and vital insights for our customers, anywhere and at any time. We own and operate a constellation of Earth-imaging satellites, including the world's highest resolution satellite, GeoEye-1, which provides our customers with the highest quality and most accurate satellite imagery available.

MARKET APPLICATIONS

Our capabilities serve commercial and government demand worldwide for information products and services in:

- National Security and Intelligence
- Online Mapping
- Aviation and Marine Mapping
- Oil and Gas Planning
- Environmental Monitoring
- Infrastructure Planning
- Real Estate and Insurance
- State and Local Governments
- Agriculture and Forestry

GEOEYE IMAGERY SOURCES

GeoEye-1 captures image detail up to 0.41-meters for panchromatic images, and 1.65-meters for multispectral images. GeoEye-1, commissioned in February 2009, orbits the Earth 14 times per day at an altitude of 681km (423 miles).

IKONOS captures image detail up to .82-meters in panchromatic mode and 3.2-meters in multispectral mode that can be combined to accommodate a wide range of high-resolution imagery applications.

MJ Harden™, a GeoEye Company, provides high-resolution aerial imagery with ground resolution as fine as 1.5". MJ Harden owns and operates aircraft equipped with the latest in LiDAR technology—the ALTM Gemini system from Optech and aerial imaging technology—and the Digital Mapping Camera (DMC®) system from ZEISS/Intergraph.

LOCATION INFORMATION PRODUCTS AND SERVICES

Imagery Collection

GeoEye collects tens of millions of square kilometers of Earth imagery annually with its own satellite and aerial assets: GeoEye-1, IKONOS, and MJ Harden digital aerial and LiDAR systems.

Production Services

GeoEye is the trusted source for providing high-end, value-added services, delivering advanced image-processing products and engineering analysis. Our products and services are backed by in-house expertise and extensive quality assurance practices.

Information Services

As demand grows for geospatial information, GeoEye's information services allow our customers to access secure, timely, and accurate location information and seamlessly integrate that data into their current business environment.

PARTNERS AND AFFILIATES

Our products are available through direct sales and a worldwide network of value-added resellers, regional distributors, and select strategic partners. To find a partner in your region, go to www.geoeye.com/partners.

GEOEYE AT-A-GLANCE

Headquarters:

Dulles, Virginia

Operation Facilities and Offices:

Thornton, Colorado
St. Louis, Missouri
Norman, Oklahoma
Mission, Kansas (MJ Harden)
Singapore

Imaging Satellites and Aircraft:

GeoEye-1, IKONOS, 2 aircraft with Digital Mapping Cameras, 1 aircraft with LiDAR sensor

Imagery Archive:

Over 330 million sq. km.

Product Orders and Information:

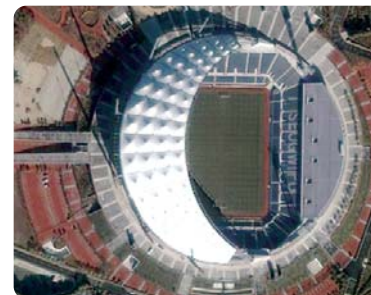
Customer Service 1.800.232.9037

Website:

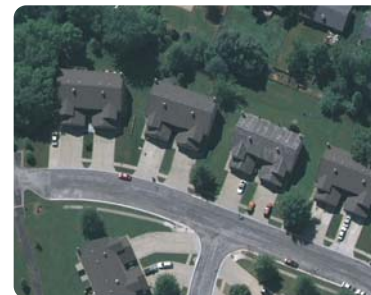
www.geoeye.com



GeoEye-1 .50-meter resolution



IKONOS 1-meter resolution



MJ Harden aerial platform



21700 Atlantic Blvd.
Dulles, Virginia 20166
www.geoeye.com
U.S.A.: 800.232.9037
International: +1.703.480.5670